

AvilaCanyon

ESTATES



LOT 12, PLAN 3

Contemporary Luxury in Nature

Experience the sophisticated charm of Lot 12, Plan 3 at Avila Canyon Estates. This contemporary home seamlessly blends elegant design with the natural beauty of Avila Canyon. Perfect for those who appreciate bespoke details and a luxurious lifestyle, this residence offers an exquisite combination of comfort and style.

CCB.Homes/AvilaCanyon

In an effort to meet consumer expectations, coastal community builders reserves the right to make changes or modifications to maps, plans, specifications, materials, features, and colors without notice. Please refer to the full disclaimer on the last page for details. Coastal community builders, inc.

CCB

Coastal
Community
Builders

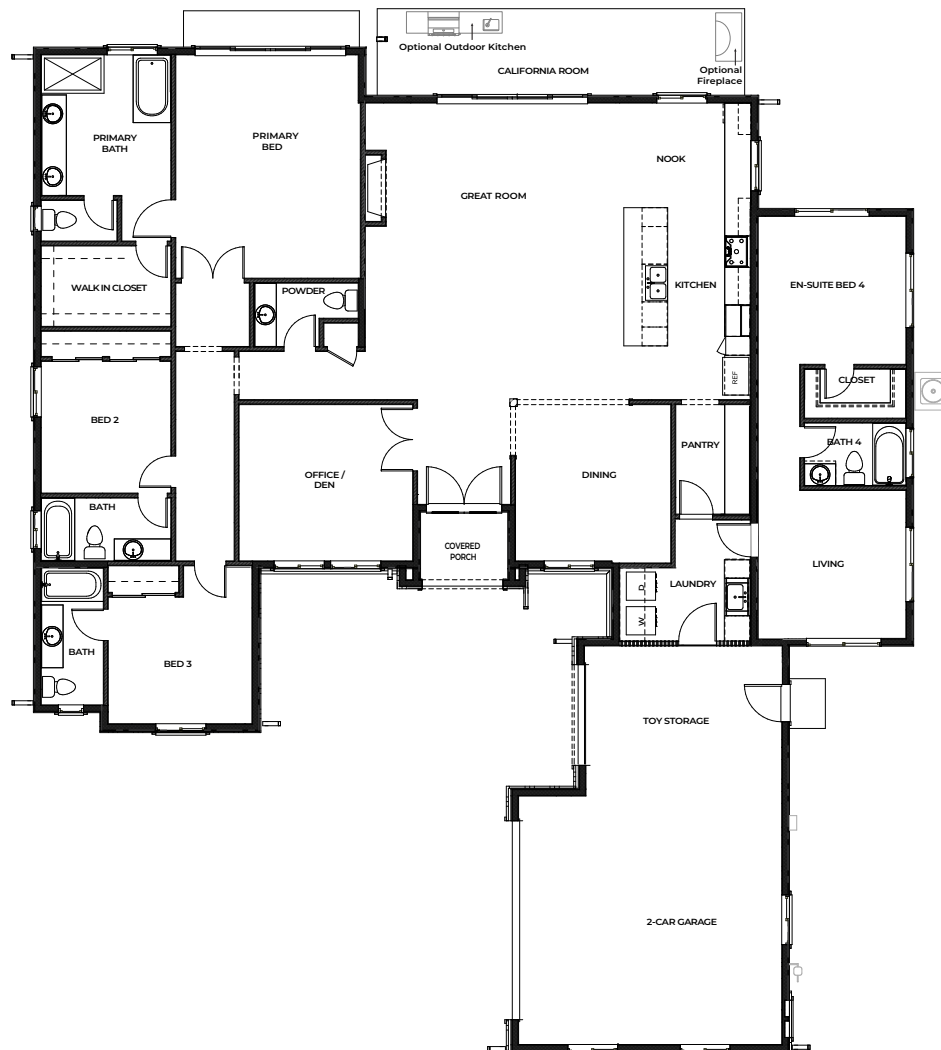
DRE# 01266964

Luxury Contemporary Living

Total Area: 2,952 sq. ft.

Step into 3,195 sq. ft. of meticulously designed space in Lot 12. This single-level home features four bedrooms, including a primary suite and a dedicated en-suite guest room, and four and a half bathrooms. The open floorplan enhances flow and functionality, with a modern kitchen that opens into a grand living area, perfect for entertaining and relaxation. High-end finishes and state-of-the-art appliances ensure both comfort and style.

- **Bedrooms: 4 (including en-suite guest room)**
- **Bathrooms: 4.5 baths**
- **Garage Spaces: 2-car garage plus additional RV/Toy storage**
- **Ceilings: 10'**
- **Large Open Kitchen**
- **Office/Den**



In an effort to meet consumer expectations, Coastal Community Builders reserves the right to make changes or modifications to maps, plans specifications, materials, features, and colors without notice. All renderings are artist conceptions and are not intended to be literal depictions of the buildings, fences, walks, driveways or landscaping. Special wall and window treatments, upgraded floor coverings, softscape, hardscape, landscape, and other items featured in and around the model homes are decorator suggested and not included in the purchase price. Residents are automatically included in the Homeowners' Association and are subject to Special Assessments and Community Facility Fees. Ask your Sales Representative for details. Plans to build out this project as proposed are subject to change without notice. Coastal Community Builders, Inc DRE #01266964

Scenic Estate Living

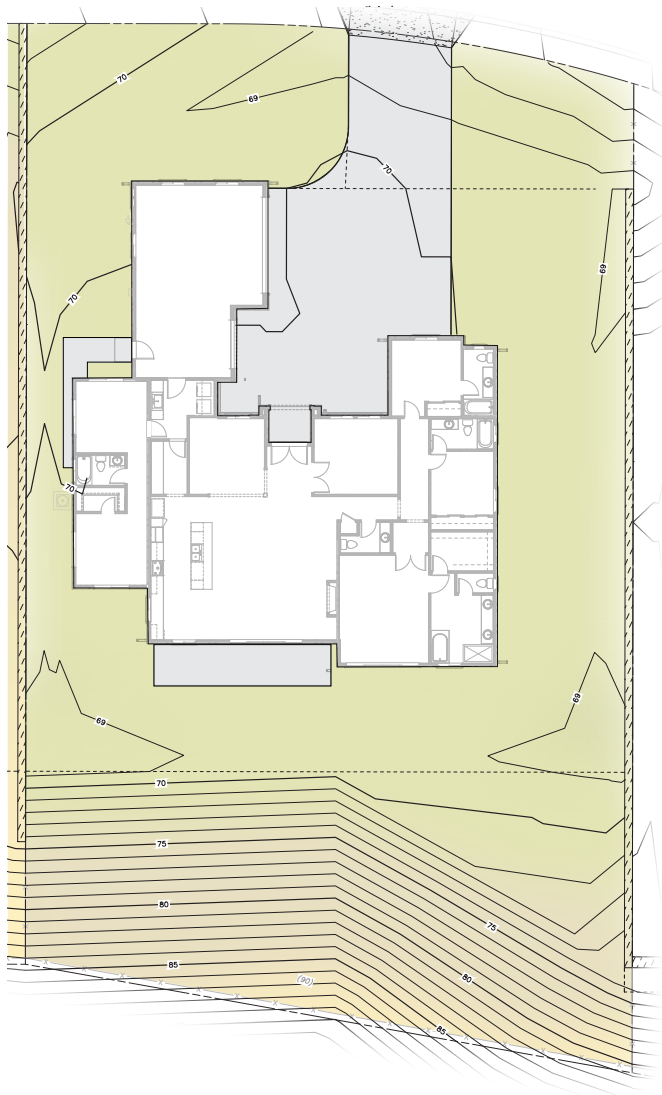
16,171.4 sq. ft. – Expansive Estate Lot

Lot 12 offers a generous private retreat with a unique elevation built into the lush hillside, earning its place in Avila Canyon. Enjoy beautiful panoramic views and the tranquility of nature. The spacious backyard is perfect for creating your dream outdoor living area, from a serene garden oasis to a luxurious patio for gatherings, all set against a picturesque hillside backdrop.

Lot Size = 16,171.4 SF±

70.50' = Finished Floor Elevation
(concrete floor finished elevation)

69.7' = Finished PAD Elevation
(dirt finished grading elevation)



In an effort to meet consumer expectations, Coastal Community Builders reserves the right to make changes or modifications to maps, plans specifications, materials, features, and colors without notice. All renderings are artist conceptions and are not intended to be literal depictions of the buildings, fences, walks, driveways or landscaping. Special wall and window treatments, upgraded floor coverings, softscape, hardscape, landscape, and other items featured in and around the model homes are decorator suggested and not included in the purchase price. Residents are automatically included in the Homeowners' Association and are subject to Special Assessments and Community Facility Fees. Ask your Sales Representative for details. Plans to build out this project as proposed are subject to change without notice. Coastal Community Builders, Inc DRE #01266964

Community Map & Your Home

Strategically located within Avila Canyon Estates, Lot 12 offers a peaceful retreat while maintaining connectivity within this exclusive community. The community map highlights Lot 12's placement, ensuring privacy and convenience.



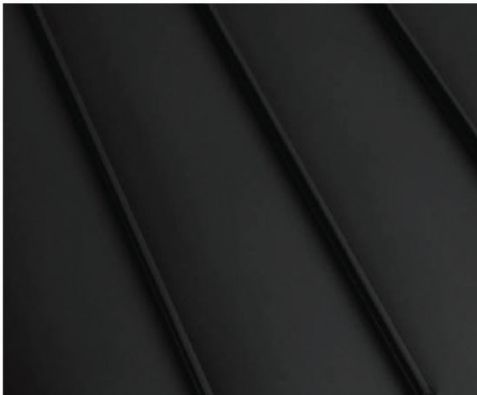
In an effort to meet consumer expectations, Coastal Community Builders reserves the right to make changes or modifications to maps, plans specifications, materials, features, and colors without notice. All renderings are artist conceptions and are not intended to be literal depictions of the buildings, fences, walks, driveways or landscaping. Special wall and window treatments, upgraded floor coverings, softscape, hardscape, landscape, and other items featured in and around the model homes are decorator suggested and not included in the purchase price. Residents are automatically included in the Homeowners' Association and are subject to Special Assessments and Community Facility Fees. Ask your Sales Representative for details. Plans to build out this project as proposed are subject to change without notice. Coastal Community Builders, Inc DRE #01266964

Sophisticated Colors & Materials

Lot 12 features a refined color palette that complements its luxury contemporary design. Exterior finishes are highlighted by Coronado Stone: Northland, adding a touch of modern elegance. The roofing uses eco-friendly materials in 'Charcoal Concrete Tile,' ensuring both durability and style. The stucco is Glacier, enhancing the overall aesthetic of this stunning home.



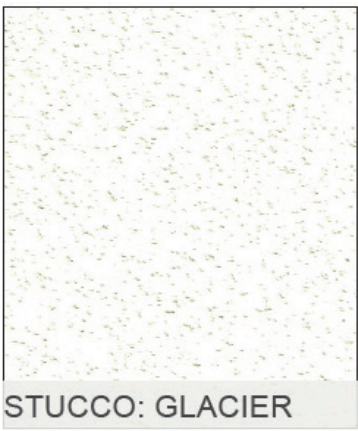
ROOF: CHARCOAL CONC. TILE



BOARD & BATT PAINT: SW PURE WHITE



FACIA/DOOR:
SW CAVIAR



STUCCO: GLACIER



CORONADO STONE:
NORTHLAND

In an effort to meet consumer expectations, Coastal Community Builders reserves the right to make changes or modifications to maps, plans specifications, materials, features, and colors without notice. All renderings are artist conceptions and are not intended to be literal depictions of the buildings, fences, walks, driveways or landscaping. Special wall and window treatments, upgraded floor coverings, softscape, hardscape, landscape, and other items featured in and around the model homes are decorator suggested and not included in the purchase price. Residents are automatically included in the Homeowners' Association and are subject to Special Assessments and Community Facility Fees. Ask your Sales Representative for details. Plans to build out this project as proposed are subject to change without notice. Coastal Community Builders, Inc DRE #01266964

Explore the Exquisite Features

Unparalleled Craftsmanship and Luxurious Details

Interior Detailing

- **Ceilings:** 10 ft. ceilings throughout
- **Doors:** 8 ft. entry doors, 8 ft. interior doors
- **Cabinetry:** Stain Grade Shaker Cabinets
- **Countertops:** Premium quartz countertops with a 6" splash
- **Faucets:** 8" spread bathroom faucets in the master bath, under-mount sinks in secondary baths
- **Safety:** Overhead fire suppression system
- **Hardware:** Satin Nickel finish hardware throughout
- **Walls:** Skip trowel hand textured walls
- **Lighting:** Prewired for custom lighting
- **Flooring:** Luxury Vinyl Plank (LVP) throughout all living areas, carpet in bedrooms
- **Paint:** Spare white velvet paint throughout
- **Fireplace:** Superior 55" linear gas fireplace

Designer Upgrades

- **Appliances:** Upgraded appliance package options
- **Design Packages:** PB Modern Upgrade, Modern Farmhouse Upgrade, RH Lux Upgrade, and Ultra Modern Upgrade
- **Outdoor Add-ons:** California room gas grill and fireplace (optional)

Exterior Features

- **Architecture:** Distinctively crafted in Modern Farmhouse & Contemporary styles
- **Parking:** garage space and design varies by plan
- **Outdoor Space:** California Room (optional)
- **Gutters:** Full wrap as needed, with downspouts
- **Landscape:** Backs to open space with rolling hills

Energy-Saving Elements

- **Windows:** Dual-pane, low-E vinyl windows and sliding doors
- **Plumbing:** Water-saving, low-flow commodes
- **Thermostat:** Digital programmable thermostat
- **Water Heater:** Tankless water heater with built-in recirculating pump
- **Lighting:** LED recessed lighting
- **Heating:** 95% efficient FAU system
- **HVAC:** Prewired for future AC condenser
- **EV:** Preplumbed for EV charger

Kitchen Design

- **Culinary Space:** Elegant and spacious gourmet kitchen with oversized island
- **Countertops:** Premium quartz countertops for effortless upkeep
- **Backsplash:** 6" continued quartz backsplash
- **Appliances:** GE Cafe Energy Star-rated appliances
- **Refrigerator:** Pre-plumbed for water at refrigerator bay

Primary Suite

- **Bedroom:** Spacious bedroom quarters
- **Master Bath Shower:** 12x24 tiled to the ceiling with nickel framed enclosure
- **Master Bath Countertops:** Quartz countertops with spacious dual sinks
- **Master Bath Tub:** 70" free-standing tub
- **Closet:** Generous walk-in wardrobe



In an effort to meet consumer expectations, Coastal Community Builders reserves the right to make changes or modifications to maps, plans specifications, materials, features, and colors without notice. All renderings are artist conceptions and are not intended to be literal depictions of the buildings, fences, walks, driveways or landscaping. Special wall and window treatments, upgraded floor coverings, softscape, hardscape, landscape, and other items featured in and around the model homes are decorator suggested and not included in the purchase price. Residents are automatically included in the Homeowners' Association and are subject to Special Assessments and Community Facility Fees. Ask your Sales Representative for details. Plans to build out this project as proposed are subject to change without notice. Coastal Community Builders, Inc DRE #01266964